

Slide into Reading!

Winter Reading Club 2025

Name (First & Last) _____

Age _____ Grade _____

School _____

Complete at least 20 activities, marking your progress as you go. When you are done, turn this log in to the Youth Desk for a free book!



Read 1 Day

Read 1 Day

Read 1 Day

Read 1 Day

Read 1 Day

Read 1 Day

Make some art

Try a new activity

Read 1 Day

Attend a library program

Make something in the Studio

Read 1 Day

Read 1 Day

Read 1 Day

Exercise

Make a recipe

Visit someplace new

Read 1 Day

Read 1 Day

Write or tell a story

Do something kind

Read 1 Day

Play a game

Make up your own activity:

Read 1 Day

Read 1 Day

Read 1 Day

Read 1 Day

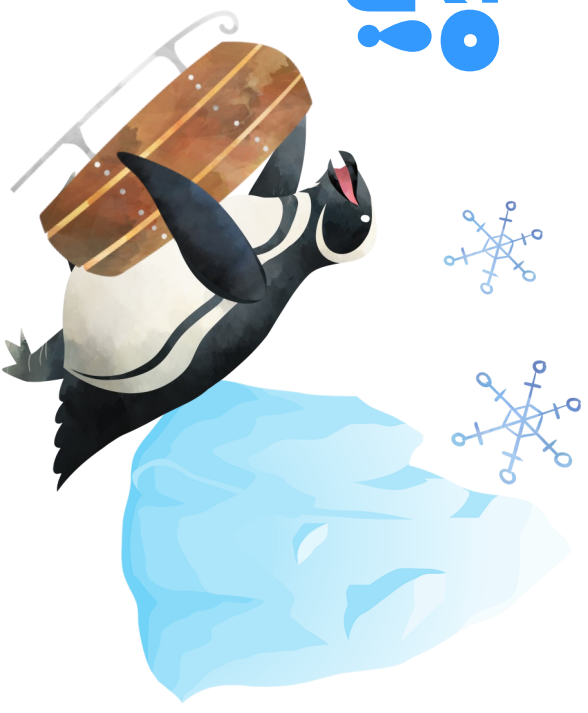
Read 1 Day

Read 1 Day



Slide into Reading!

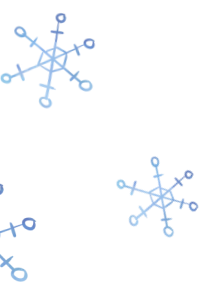
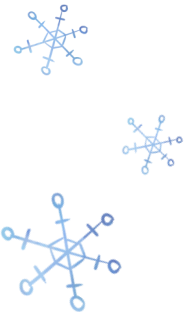
Winter Reading Club 2025



Instructions

Read, have fun, and win a free book! Complete any 20 activities (or more) on your log. Reading one day counts as an activity; so does writing a story, making a recipe, or playing a game, to name a few examples. All kinds of reading count, including independent reading, family reading, and listening to audiobooks.

When you are finished, bring your completed log to the Youth Desk to report. Tell our librarians what you've been reading and doing this winter, and pick a book from our prize cart to keep. Each participant may complete one log to receive one prize. Reading logs must be turned in by Saturday, February 15.



Visit the Studio

Between December 15 and February 15, visit the Studio to create a special penguin-themed bookmark with our vinyl cutter (recommended for grades 2 and up)!



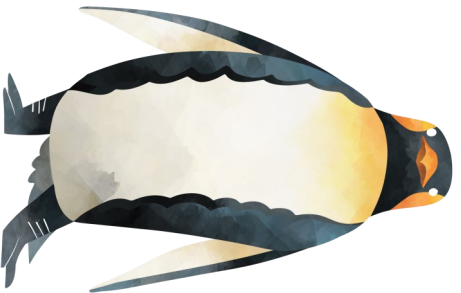
Winter Events

Slide into the library for friends and fun! View our calendar at wilmette.libnet.info/events. Some events require advance registration, as indicated on the calendar. Register online, or call us at (847) 256-6945.



Library E-Newsletters

Stay up to date with announcements delivered to your inbox. Visit wilmettelibrary.info/e-newsletters to subscribe.



Wilmette Public Library
www.wilmettelibrary.info
(847) 256-6945

